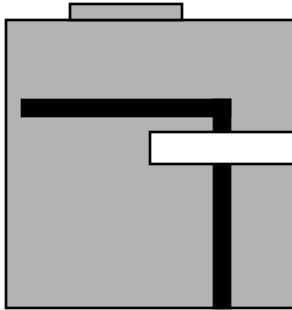




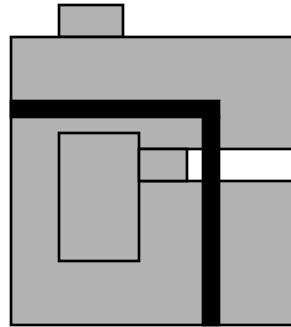
INSTALLATION INSTRUCTIONS FOR THE GF10 FILTER

Step 1:

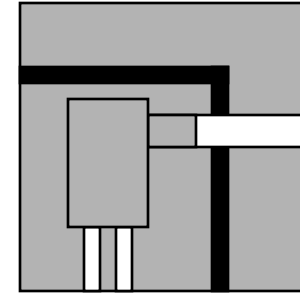
Locate and remove the septic tank cover.



Step 2: Before installation, place the filter case on to the outlet pipe. Make sure that the case is positioned so the filter can be removed from the tank for maintenance and service.

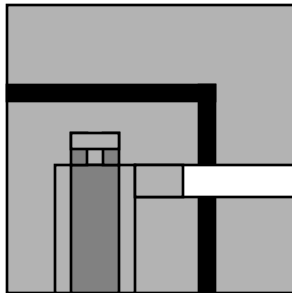


Step 3 For installations that require or desire additional support. (If additional support is not needed, go to Step 4) Glue a section of 1" Sch. 40 pipe to the two hubs located on the bottom of the case and the hub located on the side of the case.

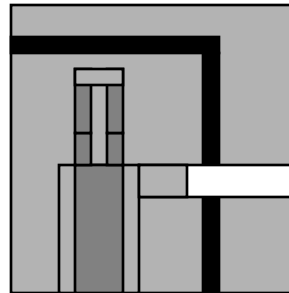


Adjust the two pipes on the bottom of the case so they rest on the bottom of the tank. Adjust the pipe on the side of the case so that it rests on the side of the case. Check the case to make sure it is level.

Step 4: Glue the filter case onto the outlet pipe. Insert the filter cartridge into the case. (Make sure the filter is completely inserted into the case.)



Step 5: For installations where it will be difficult to reach the handle, place 3/4" Schedule 40 pipe into the two tees on the handle and extend it to height that will make it easy to remove the filter. Connect the two sections of pipe with two elbows and a section of 3/4" Schedule 40 pipe.



Installation of an existing system.

Same as a new system only the septic tank must be pumped prior to installation.

MAINTENANCE OF THE GF10 FILTER

A time frame in which septic tanks are serviced is set by state and local codes.

Although they may be different, most regulatory agencies suggest two to five years.

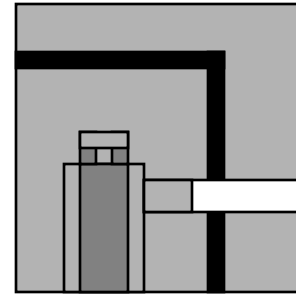
We recommend the GF10 filter be cleaned when the septic tank is normally cleaned and pumped, or as needed.

WARNING: If the liquid level in the tank is above the top of the filter, pump the tank prior to removing the filter cartridge.

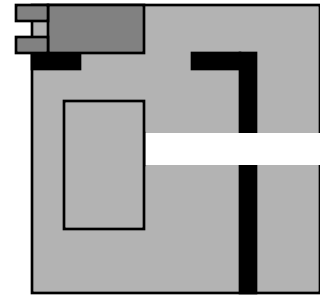


Step 1: Remove the septic tank cover and pump the tank if necessary to prevent any solids from escaping to the field when the filter is removed.

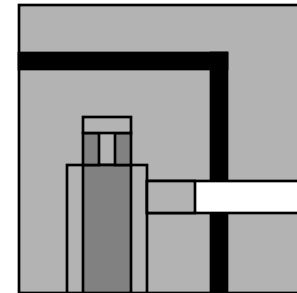
Step 2: Pull the filter handle and slide the filter out of the case.



Step 3: While holding the filter cartridge over the access opening of the tank, rinse the cartridge off with fresh water. Take care to make sure all solid material falls back into the tank.



Step 4: Insert the cartridge back into the case making sure that it is properly aligned and completely inserted into the case.



608-333-3610